

4

3

2

1

THIS DRAWING IS UNPUBLISHED.
DIFFUSION RESEINTE AMP

RELEASED FOR PUBLICATION

.19

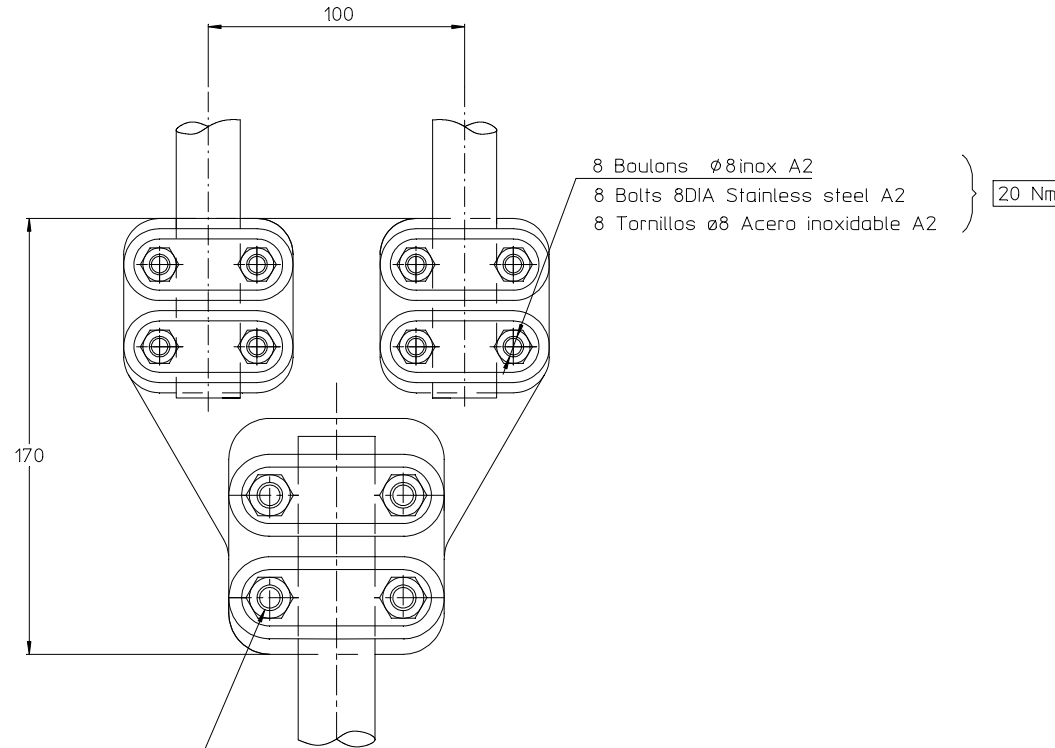
© COPYRIGHT 1997

BY AMP INCORPORATED. ALL RIGHTS RESERVED.
TOUS DROITS RESERVES

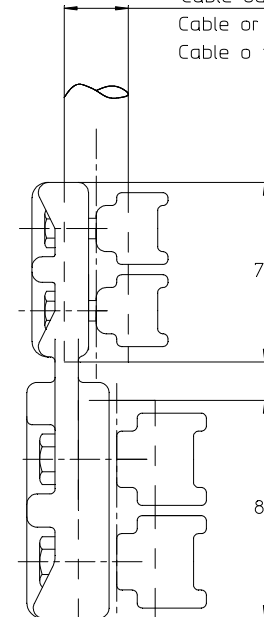
LOC DIST
FH 2

REVISIONS

P	LTR REV	DESCRIPTION MODIFICATIONS	DATE	DWN DESS.	APVD APP.
	0	F10349	12-Jun-97	EN	LR



Cable ou Tube $\phi 21$ à 25,99
Cable or tube 21DIA to 25,99
Cable o tubo $\phi 21$ a 25,99



Borne $\phi 30$
Terminal 30DIA
Borne $\phi 30$

37 Nm

4 Boulons $\phi 10$ inox A2
4 Bolts 10DIA Stainless steel A2
4 Tornillos $\phi 10$ Acero inoxidable A2

<small>THIS DRAWING IS A CONTROLLED DOCUMENT FOR AMP INCORPORATED. IT IS SUBJECT TO CHANGE AND THE CONTROLLING ENGINEERING ORGANIZATION SHOULD BE CONTACTED FOR THE LATEST REVISION. LE PLAN EST UN DOCUMENT CONTROLÉ PAR AMP INCORPORATED. IL EST SUSCEPTIBLE D'ÊTRE REVISÉ. CONTACTER LE SERVICE TECHNIQUE D'AMP SIMEL POUR OBTENIR LA DERNIÈRE REVISION.</small>		DW/DESSINE 12-Jun-97 NIVVIS CHK/VERIFIE 12-Jun-97 ROYER APVD/APPROUVE 12-Jun-97 VIAL PRODUCT SPEC SPEC. PRODUIT 02BFC0031 APPLICATION SPEC SPEC. APPLICATION - WEIGHT MASSE APPROX. 1.6 KG CUSTOMER DWG / PLAN CLIENT	AMP AMP-SIMEL 21220 Gevrey Chambertin FRANCE
DIMENSIONS: mm 	TOLERANCES UNLESS OTHERWISE SPECIFIED PER TOLERANCES NON SPECIFIEES SELON : -	NAME TITRE RD 82 F 25 E100 30	SIZE FORMAT A3
MATERIAL MATIERE -	FINISH FINITION -	CAGE CODE 00779	DRAWING NO No PLAN C=789058
		UNQUEMENT FOUR REFERENCE SCALE ECHELLE 1/2	SHEET FEUILLE 1 OF 1 DE 1 REV 0

ITEM:

